



### Continuous Discharge (CD) type

**HUGE SAVINGS** FOR OWNERS IN LONGER RUN!



- . REALLY WORKING equipment of its kind available today!
- . Patented EMULSION BREAKING technology.
- . Approvals by USA COAST GUARD and other class bodies
- . Meets ALL the requirements of the New Regulation MEPC 107/49.
- . Can achieve **LESS THAN 1PPM** oil – far below required level of 15 PPM
- . **ECONOMICAL** - Polishing filters require almost no replacing
- . **More and more Green Ship operators are opting for CD unit**
- . Available with 0.25M3, 1.0M3, 2.0M3 and 5.0M3 capacities.



**Is space onboard a constraint ?  
No problem, we have a solution:**

**CD Unit in TWO Modules**



**A PEACE OF MIND TO SUPERINTENDENTS & CREW !!**

### White Box – to PROTECT CREW – PROTECT COMPANY

- . an **INSURANCE** to the owner for fail-safe operation of existing OWS onboard!
- . Full proof “FAIL SAFE” type System
- . Ensures not even “accidental discharge” of higher than 15PPM takes place
- . Has its own PPM monitor
- . Can be connected to ship’s GPS to record discharge location.
- . Keeps log of discharge operations
- . Lockable – making one person responsible
- . No tampering possible - Operates in “Door Closed” position only



**“VERY USEFUL TOOL” FOR THE MASTER .....**  
**Enviropilot**

- . Connected to the vessel’s GPS
- . Installed on the bridge
- . Captain gets a live update on the screen of the applicable regulation for bilge water, sewage, sulfur emissions, cargo etc at the current position.
- . A must for every ship Owner / Manager.

Marinfloc AB,  
Industrivägen 10,  
472 95 Varekil, Sweden

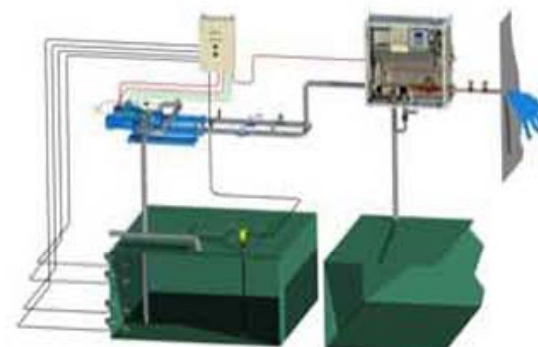




**DO NOT OVERLOAD ONBOARD OWS SYSTEM**

**Clean Drain Control - CDC**

- . Discharge condensate water overboard through CDC
- . Avoids overloading existing OWS system (which is normal practice)
- . Contents Whitebox lite with PPM Meter
- . Water with oil traces (more than 15 ppm) sent to bilges
- . New concept catching up very fast with major ship owners



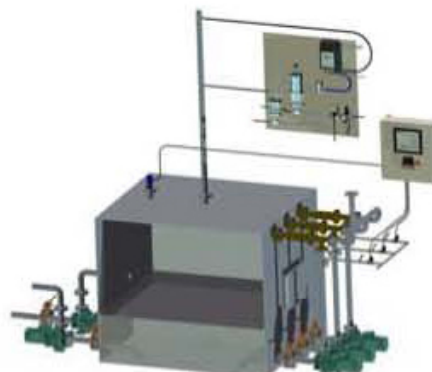
**Pre Treatment Unit with Emulsion Breaking**

Makes your existing OWS work at low cost.



**EGEA Sulphide Reduction System**

Safe way of reducing H<sub>2</sub>S in Sewage tanks



**Marinfloc Settling tanks**

Improve tank layouts onboard



**Sludge Dewatering Unit**

Reduces water in sludge



Marinfloc AB,  
Industrivägen 10,  
472 95 Varekil, Sweden

